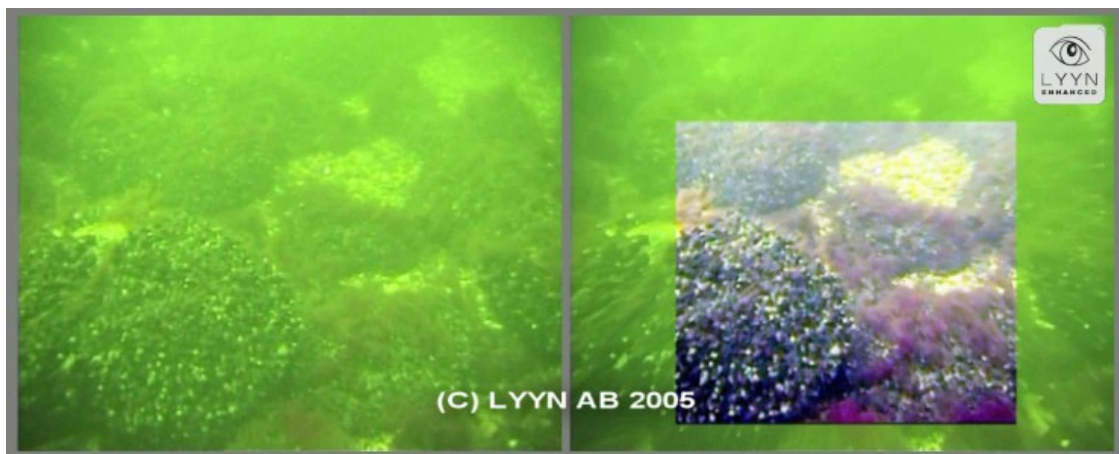


January 17, 2006

PRESS RELEASE

Engineering Geology at Lund University introduces LYYN V.E.T. for under water usage




”Engineering Geology at Lund University has over the last 20 years or so been working with underwater assessments of different types. A significant part of the work is dedicated to the use of video for mapping and inspection purposes. Here, we work mainly with technology and methodology – the applications are found in several fields, ranging from inspection and monitoring of objects to pre-investigations and marine habitat mapping. We look forward to be able to work with the LYYN technology, which we think is directly applicable to increase the efficiency in video assessments.

The brief tests are, put mildly, promising. The future co-work will initially be centred on a systematic evaluation of the benefits and limitations of the method, when used in underwater applications. In the future we hope to be able co-operate in finding new applications.” says Peter Jonsson, lecturer at Engineering Geology.

”For historic reasons LYYN has a good relationship with different institutions at the Lund University. In this cooperation we take a few more steps. Besides evaluating LYYN V.E.T. Engineering Geology will utilize our technology as a tool in their research and contract development and studies. They are also the first customer to a new LYYN V.E.T. based product that we will launch this spring.” says Fredrik Beckman, Marketing Manager LYYN AB.

For more information please visit http://www.lyyn.com/industries/cases/lth_e_g.html.



LYYN is an R&D company working with image enhancement for improving visibility in different industries. Behind the company's technology lies many years of research in the human vision system and image technologies. LYYN offers a technical platform, V.E.T., for improving visibility in real time. The platform works with digital still images and video from common cameras, in real time, but also in post processing of stored material. V.E.T. improves visibility in for instance fog, haze, snow, rain, dust, darkness, etc. as well as in sub sea and medical applications. For examples please visit www.lyyn.com.

Engineering Geology is a part of Lund University, the largest unit for research and higher education in Sweden. We work with engineering geology and applied geophysics. Our contributions are found in areas as different roads, bridges, dams and tunnels, wells thousands of meters deep, measurements of the Greenlandic icecap, underwater mapping, geothermal energy, groundwater mapping in arid or tropical areas, etc. Here, we develop instruments as well as methods for measurements and evaluation. You can reach us at: phone +46-46 222 7425, e-mail tg@tg.lth.se or at www.tg.lth.se.

For more information, please contact:

Marketing Manager Fredrik Beckman at +46 46 286 57 90 or fredrik.beckman@lyyn.com

Lecturer Peter Jonsson, M.Sc. Tech Lic, at +46 46 222 4958 or peter.jonsson@tg.lth.se